

ASEAN STATISTICAL LEAFLET

SELECTED KEY INDICATORS

2016



one vision
one identity
one community

The Association of Southeast Asian Nations (ASEAN) was established on 8 August 1967. The Member States are Brunei Darussalam, Cambodia, Indonesia, Lao PDR, Malaysia, Myanmar, Philippines, Singapore, Thailand and Viet Nam. The ASEAN Secretariat is based in Jakarta, Indonesia.

For inquiries, contact:
The ASEAN Secretariat
Community Relations Division (CRD)
70A Jalan Sisingamangaraja
Jakarta 12110
Indonesia
Phone : (62 21) 724-3372, 726-2991
Fax : (62 21) 739-8234, 724-3504
E-mail : public@asean.org

Catalogue-in-Publication Data

ASEAN Statistical Leaflet – Selected Key Indicators 2016
Jakarta, ASEAN Secretariat, September 2016

315.59
1. ASEAN – Profile – People
2. Trade – Investment – Infrastructure – Connectivity

ISBN 978-602-6392-05-3

ASEAN: A Community of Opportunities

The text of this publication may be freely quoted or reprinted, provided proper acknowledgement is given and a copy containing the reprinted material is sent to the Community Relations Division (CRD) of the ASEAN Secretariat, Jakarta.

General information on ASEAN appears online at the ASEAN Website: www.asean.org

Copyright Association of Southeast Asian Nations (ASEAN) 2016.
All rights reserved.

ASEAN: PROFILE, TRADE, SOCIO-DEMOGRAPHY, INVESTMENT AND CONNECTIVITY, 2015

REGIONAL PROFILE

Land Area (Million Sqkm)	4.5
Population (Million)	628.9
Population Density (persons per sqkm)	140.1
Population as % World Population	8.7
ASEAN+3 Population (Million)	2,181.1
ASEAN+3 as % World Population	30.2
ASEAN+6 Population (Million)	3,502.5
ASEAN+6 as % World Population	48.5
GDP at Current Market Prices (US\$ Trillion)	2.4
GDP as % of World GDP	3.3
GDP per Capita (US\$)	3,866.8
GDP Growth at Constant Price (%)	4.7
ASEAN+3 GDP (US\$ Trillion)	18.9
ASEAN+3 as % of World GDP	25.9
ASEAN+6 GDP (US\$ Trillion)	22.4
ASEAN+6 as % of World GDP	30.6

SOCIO-DEMOGRAPHY

Sex Ratio (male per 100 female)	99.8
Persons Below 5 years (000)	57,436.9
Persons 65 years and over (000)	37,414.9
Youth 15-29 years (000)	161,112.1
Urban Population (%)	22.5-100.0
Below National Poverty Line (%), 2013 figure	25.2-1.7
Below PPP\$2 (%)	15.0
Unemployment Rate (%)	0.5-6.9
Adult Literacy Rate (%)	79.0-97.2
Net Enrollment Primary Education (%)	93.8-100
Girls-Boys ratio in 2 nd Education (per 100 boys)	92-100
Access to safe drinking water (%)	44.0-100
Access to improved sanitation (%)	51.0-100
Immunization - Measles, 1 year old (%)	87.0-97.0
Infant Mortality Rate (per 1000 live births)	58.7-1.8
Life expectancy (years)	69.0-82.8

Source: ASEAN Secretariat, UNCTAD, UNICT

Notes:

- ASEAN +3 covers China, Japan and Republic of Korea
- ASEAN +6 covers ASEAN+3, Australia, New Zealand, and India
- GDP data as of 1 July 2016
- Trade data as of 23 August 2016
- Foreign Direct Investment as of 30 June 2016
- (...): indicates minus or decrease

TRADE IN GOODS

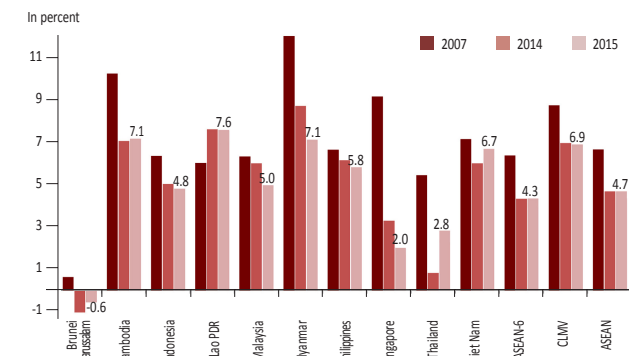
Total Trade (US\$ Billion)	2,269.9
Total Trade as % GDP	93.3
ASEAN +3 Total Trade (US\$ Billion)	8,463.4
ASEAN +3 as % of World Trade	25.5
ASEAN +6 Total Trade (US\$ Billion)	9,593.9
ASEAN +6 as % of World Trade	28.9
Ratio of Trade Compared with 5 years ago (%)	1.1
Rate of Growth of ASEAN Trade (%)	(10.2)
Rate of Growth of Export (%)	(8.6)
Rate of Growth of Import (%)	(12.0)
Share of Intra-ASEAN Trade (%)	24.1
Share of Intra-ASEAN Trade 5 Years ago (%)	25.4
Trade Balance (US\$ Billion)	93.92
Trade Balance with China (US\$ Billion)	(77.59)
Trade Balance with Japan (US\$ Billion)	(10.41)
Trade Balance with ROK (US\$ Billion)	(30.51)

INVESTMENT AND CONNECTIVITY

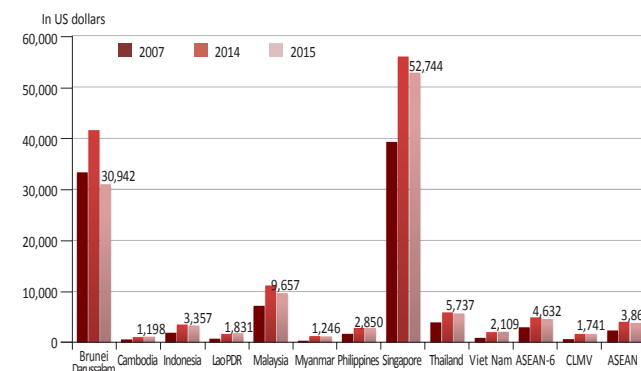
Total FDI Inflows (US\$ Million)	119,974.8
Rate of Growth in FDI Inflows (%)	(7.7)
Share of Intra-ASEAN FDI (%)	18.5
Tourist Arrival (Million)	108.8
Rate of Growth in Tourist Arrival (%)	3.6
Share of Intra-ASEAN tourist arrival (%)	42.4
Share of Tourist Arrival from The Plus 3 (%)	26.6
Share of Tourist Arrival from USA (%)	3.2
Share of Tourist Arrival from EU28 (%)	8.2
Internet Subscriber per 100 persons	18.2-82.1
Cellular Phone per 100 persons	53.1-146.1
Road Length (Million km)	1.4
Paved Network (Million km)	0.8
Total Road Vehicles per 1000 population	317.4
Railways Passenger (Million)	1,840.1
International Air Passenger Traffic (Million)	201.2

- Transport indicators, some data used are 2014 figures
- Below PPP\$2 (%), the Latest AMS figure
- Below National Poverty Line (%), Latest AMS figure
- Adult literacy rate (%), Latest AMS figure
- Net Enrollment primary education (%), Latest AMS figure
- Girls-Boys ratio in 2nd Education (per 100 boys), Latest AMS figure
- Infant Mortality Rate (per 1000 live births), Latest AMS figure

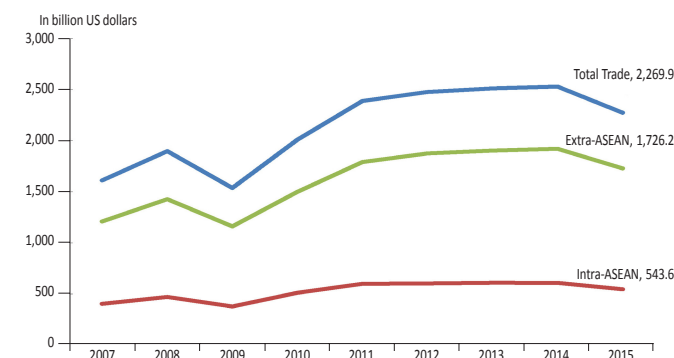
Annual GDP Growth



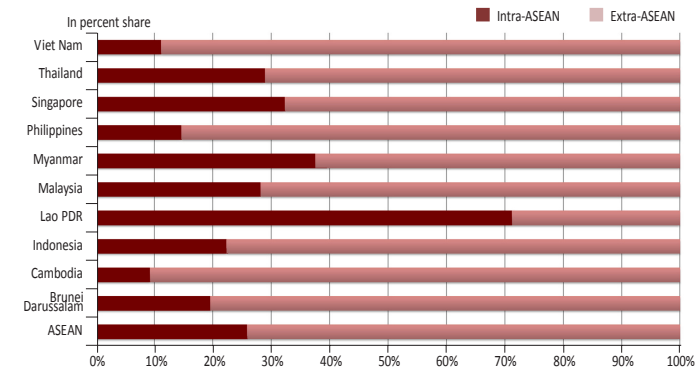
GDP per Capita (at current price)



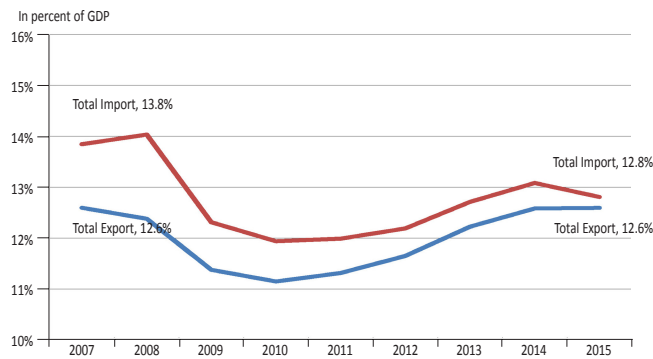
Trade in Goods



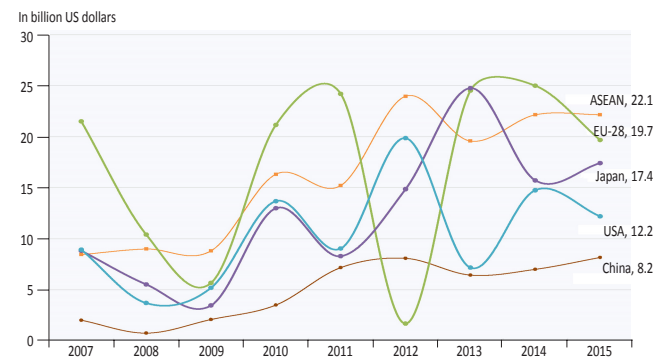
ASEAN Member States Exports of Goods by Destination, 2015



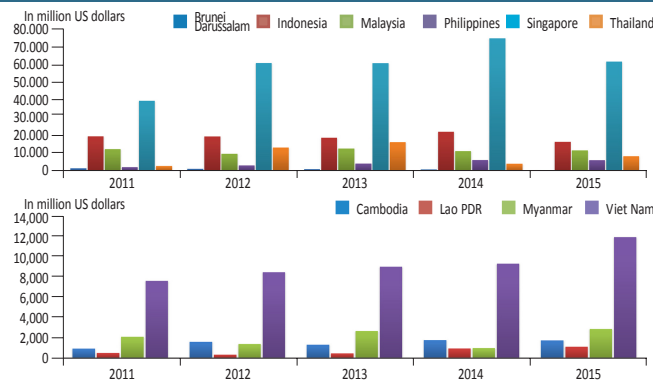
Trade in Services



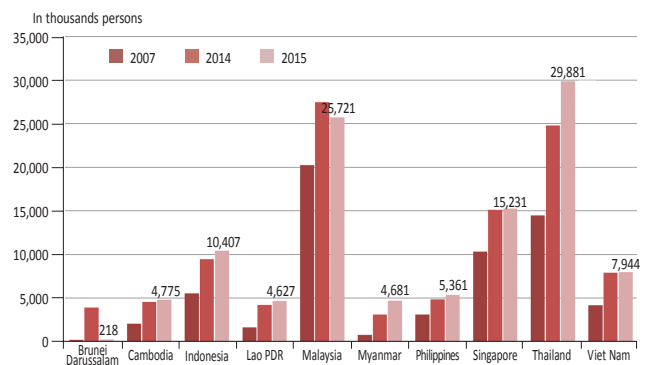
Net Inflows of FDI



Net Inflows of FDI, by ASEAN Member States



Tourist Arrivals



ASEAN MEMBER STATES: PROFILE, TRADE, SOCIO-DEMOGRAPHY, INVESTMENT AND CONNECTIVITY, 2015

COUNTRY PROFILE AND TRADE

	Land area (Sqkm)	Population (000)	Population Density (persons per sqkm)	GDP at Current Market Prices (US\$m)	GDP per Capita (US\$)	GDP Growth at Constant Price (%)	Share of Services Sectors in GDP (%)	Inflation Rate (%), end of period	Trade in Goods Export (US\$m)	Trade in Goods Import (US\$m)	Trade in Goods Balance (US\$m)	Rate of Growth of Goods Export (%)	Rate of Growth of Goods Import (%)	Share of Intra-ASEAN Trade in Goods (%)	Trade in Services Export (US\$m)	Trade in Services Import (US\$m)
Brunei Darussalam	5,769.0	417.2	72.3	12,909.0	30,942.1	(0.6)	37.7	(1.0)	6,350.1	3,042.3	3,307.8	(40.0)	(15.4)	27.2	1,037.5	1,544.9
Cambodia	181,035.0	15,405.2	85.1	18,463.0	1,198.5	7.1	39.6	2.8	8,838.5	10,837.6	(1,999.1)	(17.3)	(42.9)	25.7	3,951.8	1,916.9
Indonesia	1,913,578.7	255,461.7	133.5	857,603.3	3,357.1	4.8	46.0	3.4	150,282.3	142,694.8	7,587.5	(14.8)	(19.9)	25.6	22,228.5	30,529.1
Lao PDR	236,800.0	6,902.4	29.1	12,639.3	1,831.2	7.6	40.2	0.9	3,714.3	3,049.2	665.1	40.7	10.9	64.9	799.3	585.2
Malaysia	330,290.0	30,485.3	92.3	294,389.6	9,656.8	5.0	53.5	2.7	199,869.2	175,961.0	23,908.2	(14.6)	(15.8)	26.9	34,271.2	39,596.2
Myanmar	676,577.0	52,476.0	77.6	65,391.8	1,246.1	7.1	40.7	10.3	11,431.8	16,843.6	(5,411.8)	3.6	3.8	42.0	3,981.0	2,572.2
Philippines	300,000.0	101,562.3	338.5	289,502.8	2,850.5	5.8	57.0	1.5	58,648.4	70,295.3	(11,646.9)	(5.1)	3.7	19.6	28,167.4	23,923.8
Singapore	719.1	5,535.0	7,697.1	291,937.6	52,743.9	2.0	67.9	(0.6)	366,344.3	296,764.9	69,579.4	(10.6)	(19.0)	26.2	139,613.3	143,471.8
Thailand	513,119.5	68,979.0	134.4	395,726.3	5,736.9	2.8	57.7	(0.9)	214,396.2	202,751.2	11,645.1	(5.8)	(11.1)	22.6	61,083.9	50,951.2
Viet Nam	330,951.1	91,713.3	277.1	193,406.7	2,108.8	6.7	38.3	0.6	162,013.9	165,729.9	(3,716.0)	9.4	13.8	13.9	11,195.0	16,457.0

SOCIO-DEMOGRAPHY

	Sex ratio (Male per 100 Female)	Persons below 5 Year (000)	Persons 65 Year and Over (000)	Youth 15-29 Year (000)	Urban Population (%)	Below National Poverty Line (%)	Below PPP\$2 (%)	Unemployed Rate (%)	Adult Literacy Rate (%)	Net Enrollment Primary Education (%)	Girls-Boys Ratio in 2nd Education (per 100 Boys)	Access to Safe Drinking Water (%)	Access to Improved Sanitation (%)	Immunization - Measles, 1 year old (%)	Infant Mortality Rate (per 1000 Live Births)	Life Expectancy (years)
Brunei Darussalam	108.0	32.9	17.8	109.5	78.7	NA	NA	6.9	97.2	97.4	88.0	100.0	80.0	97.0	7.6	77.4
Cambodia	96.2	1,600.5	710.2	4,814.6	23.0	16.0	41.3	0.5	80.7	97.0	94.0	54.5	55.9	94.0	33.0	66.6
Indonesia	101.0	24,065.5	13,730.1	64,353.7	53.3	11.1	43.3	6.2	95.2	96.2	101.0	71.0	62.1	71.6	27.2	70.1
Lao PDR	100.0	956.8	254.1	2,033.0	38.0	23.2	62.0	1.9	79.0	95.2	58.4	70.0	62.0	87.0	58.7	65.4
Malaysia	105.5	2,577.5	1,779.9	8,550.9	74.0	1.7	2.3	3.2	94.2	97.3	99.2	92.9	99.8	94.0	6.3	74.9
Myanmar	97.2	4,936.4	3,078.4	14,191.3	30.0	23.6	NA	4.0	89.5	86.4	92.9	69.5	74.3	86.0	35.3	65.6
Philippines	101.8	11,327.3	4,873.8	28,112.8	44.0	25.2	41.7	6.5	95.4	93.8	100.0	82.7	91.6	91.0	23.0	70.4
Singapore	96.5	183.6	459.7	778.1	100.0	NA	NA	2.8	96.8	100.0	100.0	100.0	100.0	95.0	1.7	82.7
Thailand	96.2	3,960.8	5,999.3	15,606.7	49.0	13.2	3.5	0.8	96.1	103.1	106.0	97.0	97.2	98.0	6.6	74.1
Viet Nam	97.3	7,795.6	6,511.6	22,561.5	33.1	8.4	12.5	2.3	94.8	96.6	92.0	91.0	77.4	97.0	14.9	73.2

INVESTMENT AND CONNECTIVITY

	Total FDI Inflows (US\$m)	Rate of Growth in FDI Inflows (%)	Share of Intra-ASEAN FDI (%)	Tourist Arrival (000)	Rate of Growth in Tourist Arrival (%)	Share of Intra-ASEAN Tourist Arrival (%)	Share of Tourist Arrival from the Plus 3 (%)	Share of Tourist Arrival from USA (%)	Share of Tourist Arrival from EU28 (%)	Internet Subscriber per 100 Persons	Cellular Phone per 100 Persons	Road Length (km)	Paved Network (km)	Total Road Vehicles per 1000 Population	Railways Passenger (million)	International Air Passenger Traffic (000)
Brunei Darussalam	171.3	(69.8)	50.6	218.2	-	54.4	20.2	1.7	8.7	71.2	108.1	3,234.6	2,898.6	713.8	N/A	1,717.0
Cambodia	1,701.0	(1.5)	25.0	4,775.2	6.1	43.9	26.9	4.6	12.8	19.0	133.0	54,480.0	5,959.0	25.9	-	5,606.0
Indonesia	16,072.8	(26.3)	58.0	10,406.8	10.3	39.0	19.3	2.7	11.3	22.0	132.3	508,000.0	287,926.0	465.2	327.8	9,533.0
Lao PDR	1,079.2	18.2	20.6	4,627.1	11.3	77.6	15.6	1.4	3.8	18.2	53.1	51,597.0	9,397.2	229.9	0.4	921.2
Malaysia	11,289.6	3.8	24.1	25,721.3	(6.3)	74.4	10.0	1.4	1.5	71.1	143.9	205,786.9	156,691.9	862.8	2.2	39,984.2
Myanmar	2,824.5	198.5	79.0	4,681.0	51.9	37.7	48.2	1.5	4.3	21.8	76.7	116,398.0	50,345.0	102.6	42.7	3,428.1
Philippines	5,724.2	(1.6)	2.9	5,360.7	10.9	9.0	43.4	14.5	8.3	40.7	118.1	32,633.0	28,919.0	85.7	360.2	17,168.1
Singapore	61,284.8	(17.7)	5.6	15,231.5	0.9	37.7	22.8	3.3	8.6	82.1	146.1	3,496.0	3,496.0	177.7	1,058.5	54,835.6
Thailand	8,027.5	115.8	17.6	29,881.1	20.6	26.4	35.8	2.9	12.8	39.3	125.8	234,072.6	190,077.4	515.3	36.4	51,150.5
Viet Nam	11,800.0	28.3	18.2	7,943.7	0.9	16.4	44.9	4.6	10.2	52.7	130.6	211,496.0	108,023.0	17.9	11.8	16,891.0

Source: ASEAN Secretariat, UNCTAD, UNICT

Notes: All the Data are 2015 figure, except:

- Urban Population (%), 2015 figure from World Bank Database
- Adult literacy rate (%), Latest AMS figure available
- Net Enrollment primary education (%), Latest AMS figure available
- Girls-Boys ratio in 2nd Education (per 100 boys), Latest AMS figure available
- (...): indicates minus or decrease

- Access to improved sanitation (%), Latest AMS figure available
- Infant Mortality Rate (per 1000 live births), Latest AMS figure available
- Life expectancy (years), Latest AMS figure available
- Brunei Darussalam data on tourist arrivals covered only visitor arrivals by air transport